

# Beading and Embroidery







# NATIVE QUILLWORK/BEADWORK

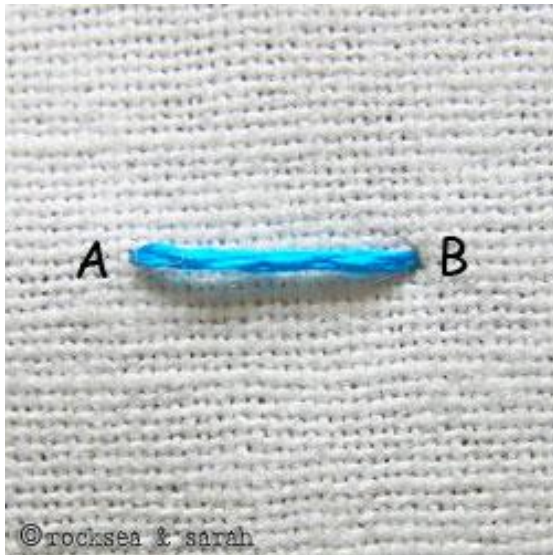
<http://www.youtube.com/watch?v=y4eat0W6lmY>

<http://www.youtube.com/watch?v=zvMyhioYtN0>

<http://www.youtube.com/watch?v=YEYGXlloz80>

# Embroidered or Beaded Item

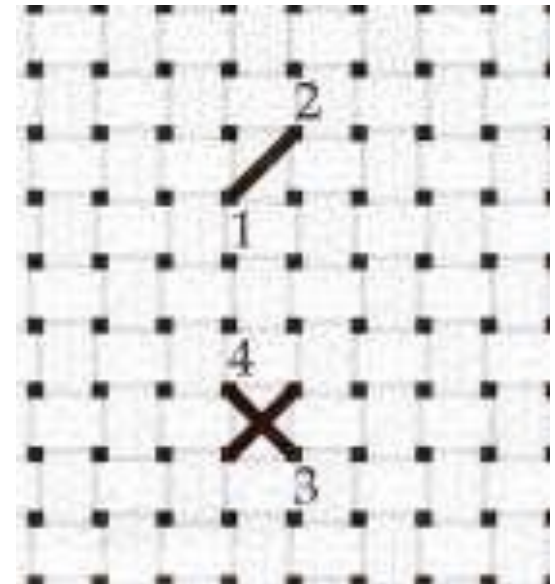
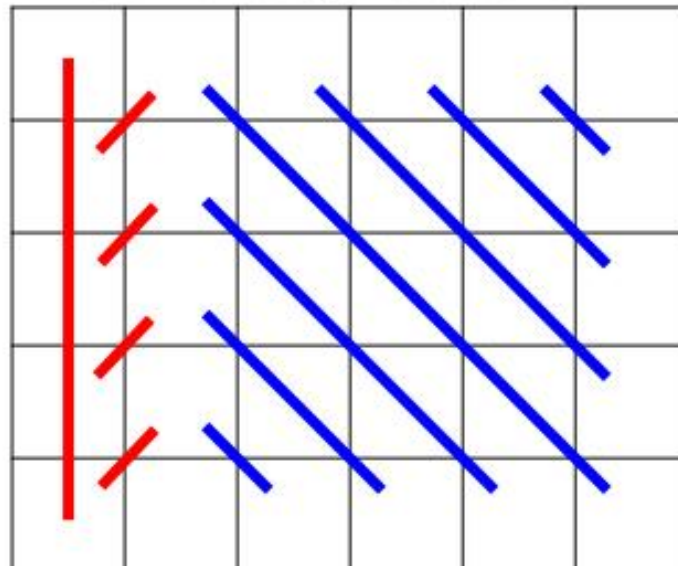
- Choose a traditional or contemporary item to embroider or bead (i.e., medicine pouch, moccasins, canvas shoes, ball cap, hoodie etc.).
- Google image search traditional Native patterns and either copy, modify or create your own design with traditional elements.
- Size of your design can vary – if using small stitches, make project 4x4 inches. If using larger stitches, make project 6x6 inches.

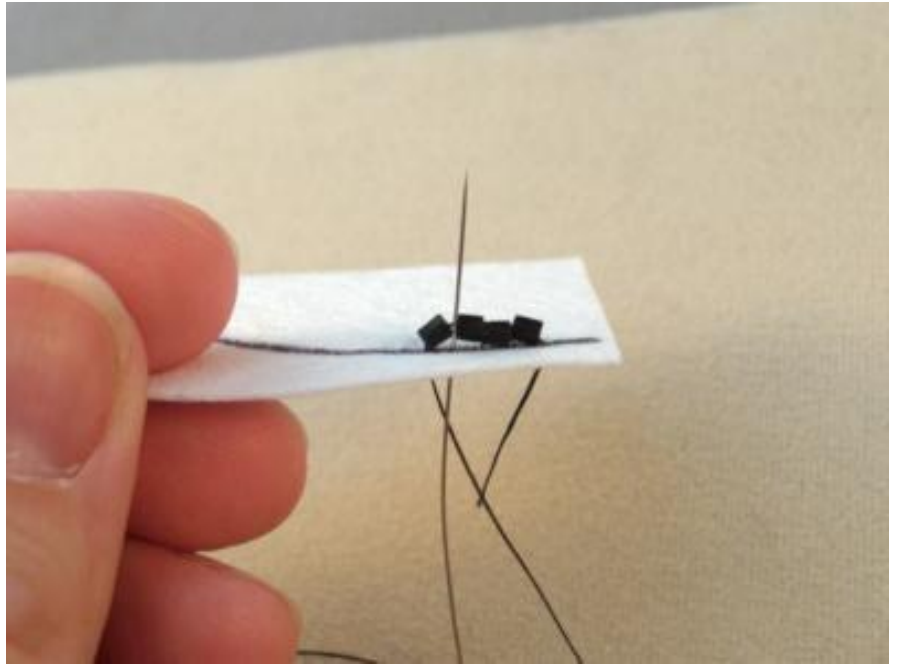
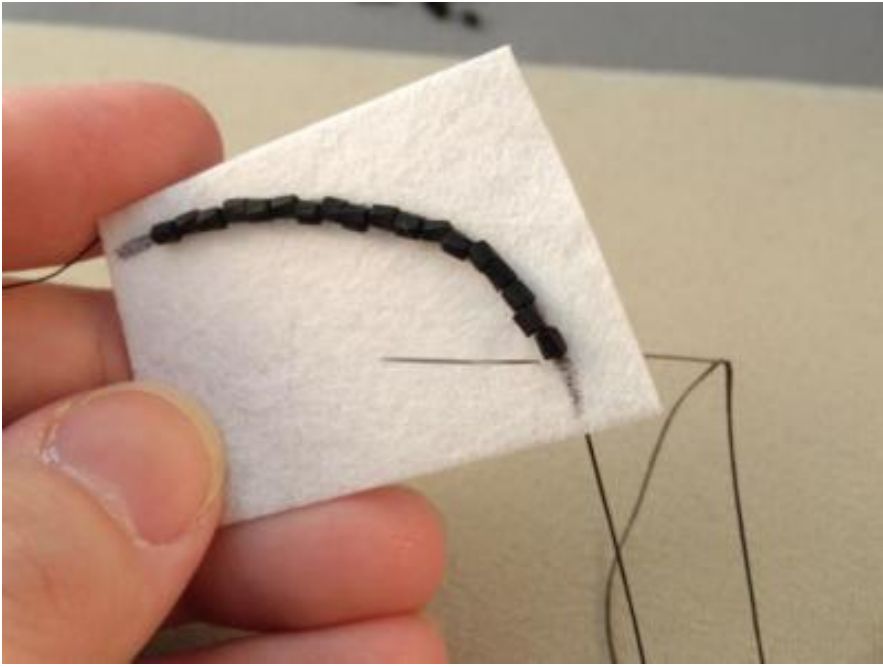


**Straight Stitches Next to Diagonal Stitches - tent stitch and diagonal stitch sharing same holes.**



**Stitch Diagram of vertical Gobelin Stitch next to diagonal Scotch Stitch.**





# Embroider/Beadwork Tutorials

- <http://www.youtube.com/watch?v=GeHQn5IZYaI>
- <http://www.youtube.com/watch?v=YruTAz86tT4>
- <http://www.youtube.com/watch?v=OLYdbatulwM>
- <http://www.youtube.com/watch?v=71CY6e20d0Q>



# Student Examples

